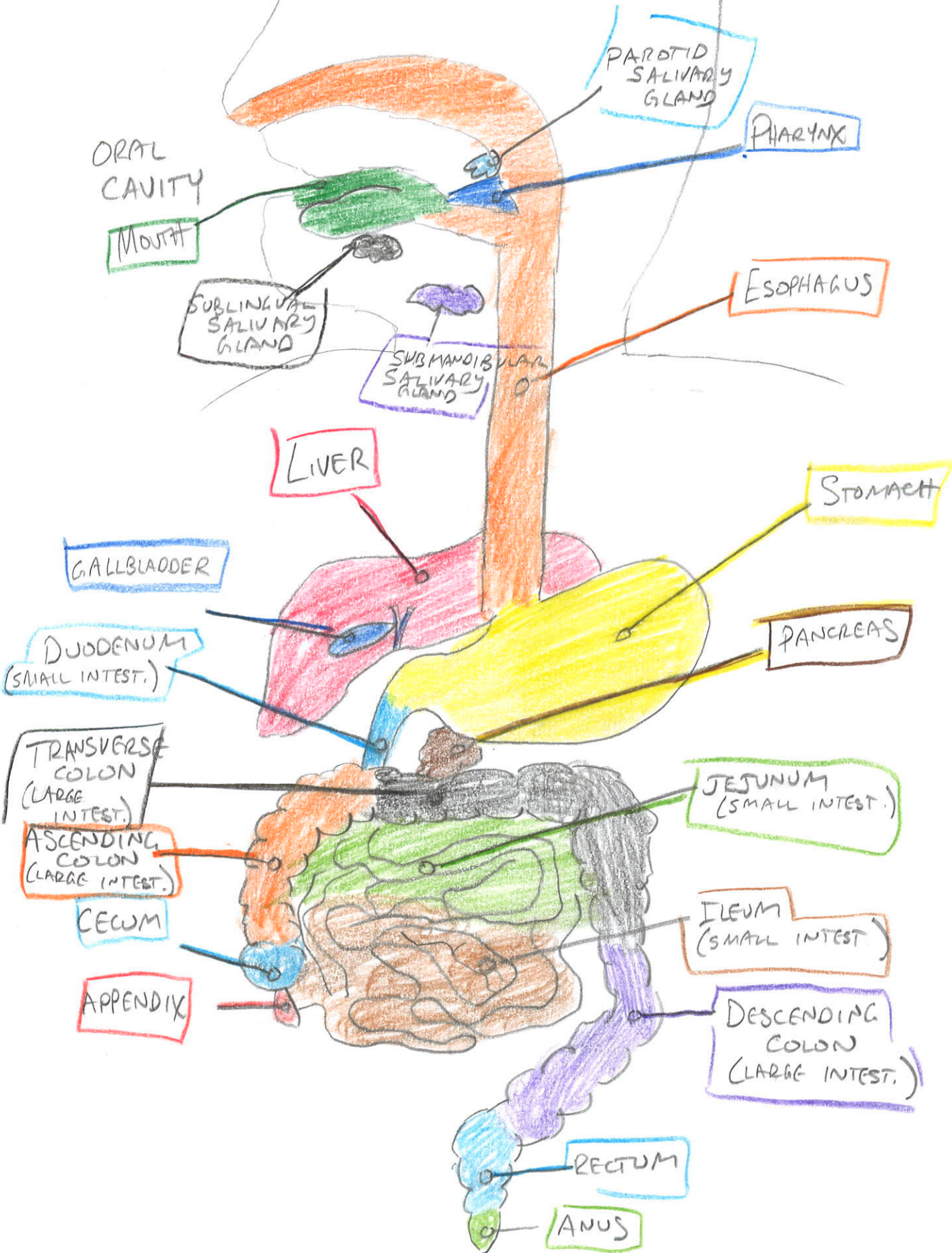
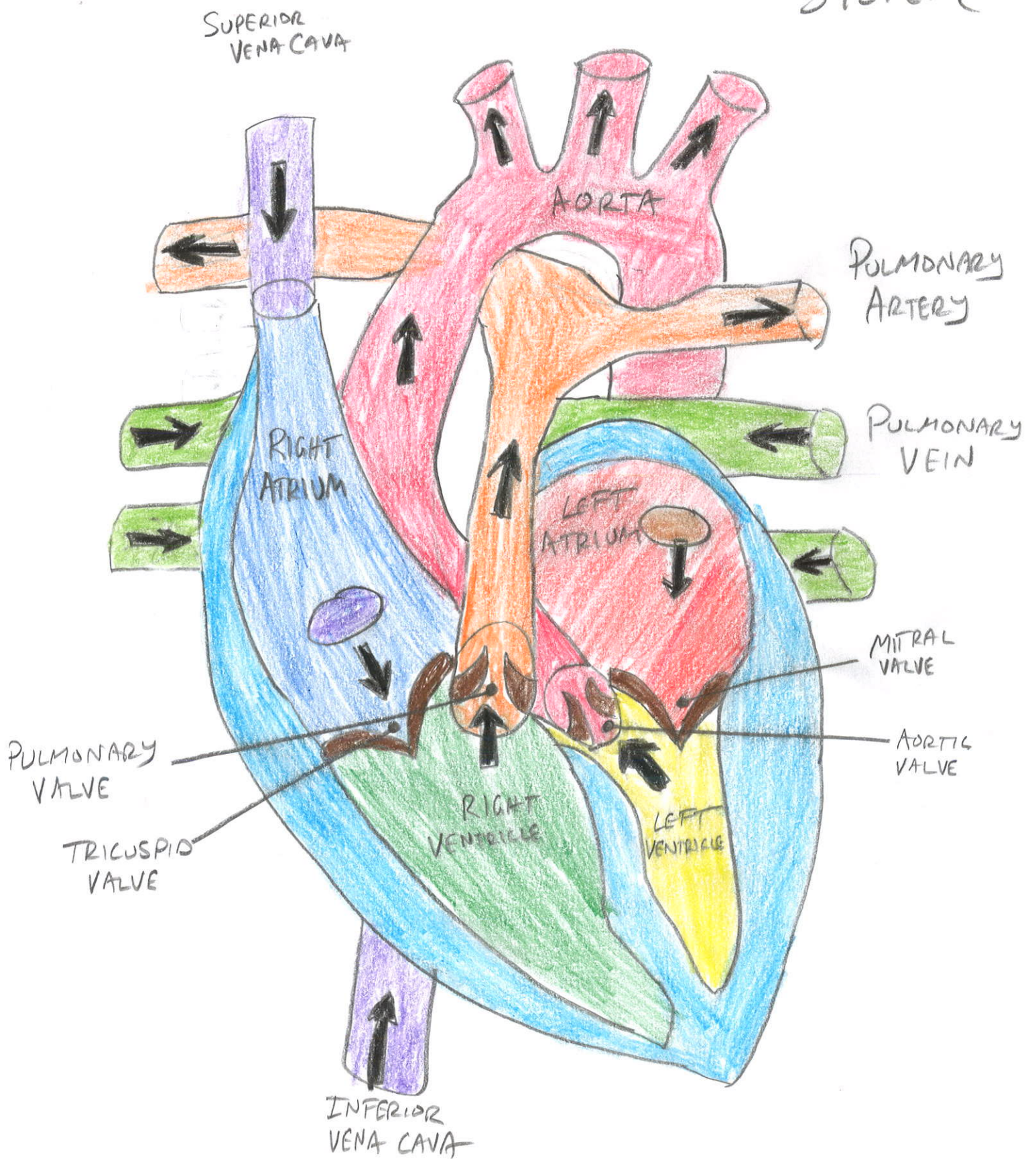


DIGESTIVE SYSTEM

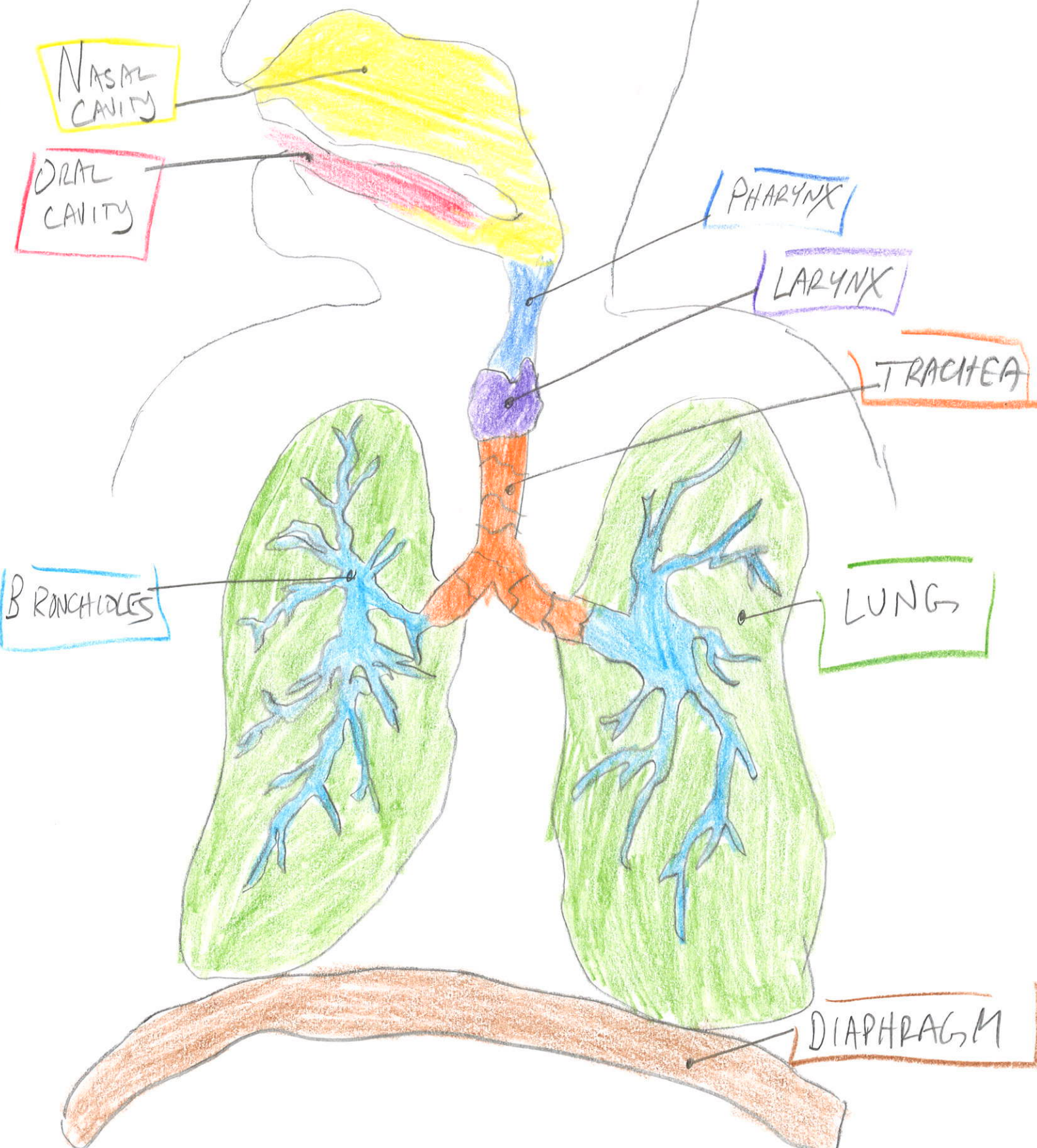
LIZ PERAS



CIRCULATORY SYSTEM



RESPIRATORY/
VENTILATION



NASAL
CAVITY

ORAL
CAVITY

PHARYNX

LARYNX

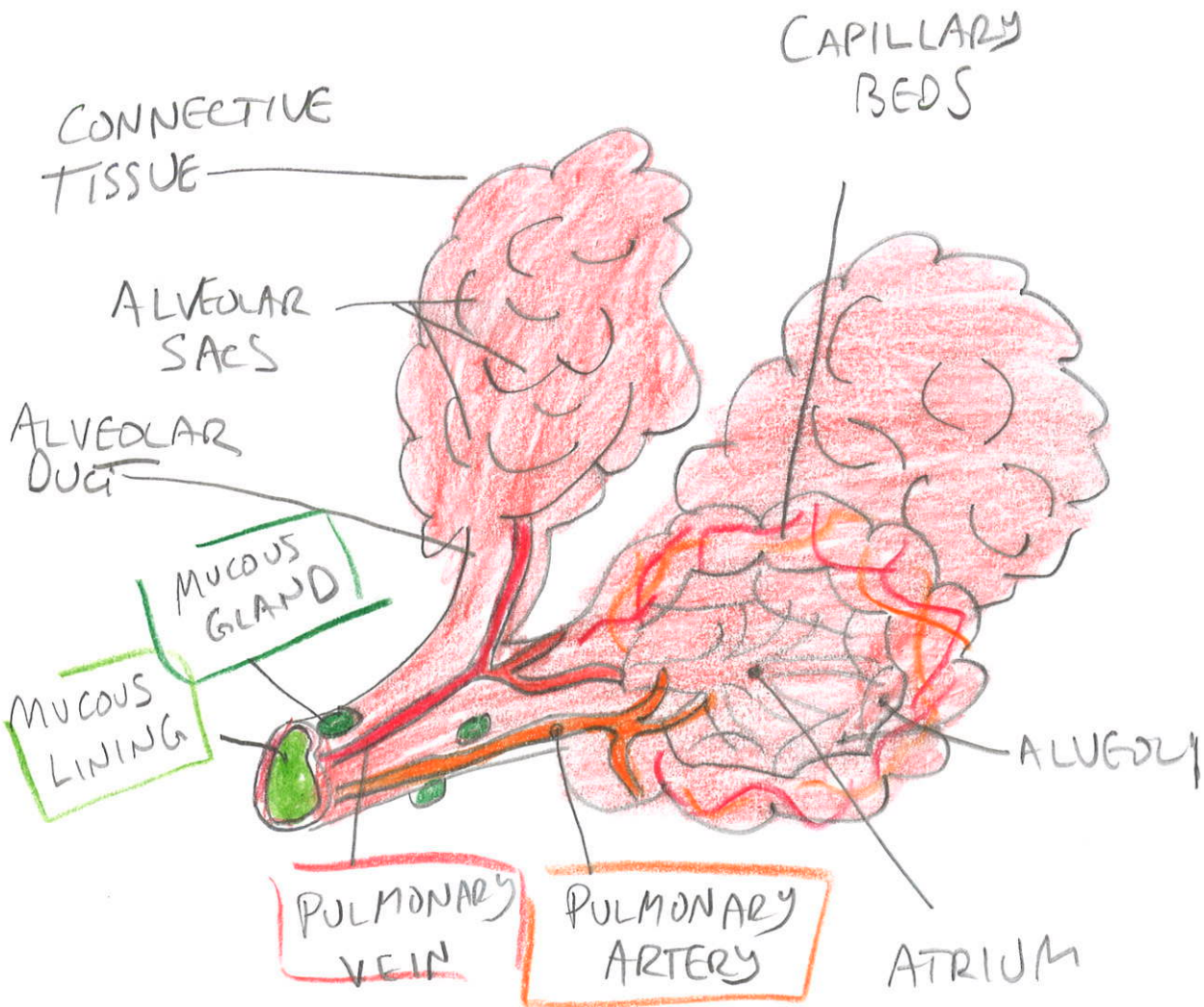
TRACHEA

BRANCHIOLES

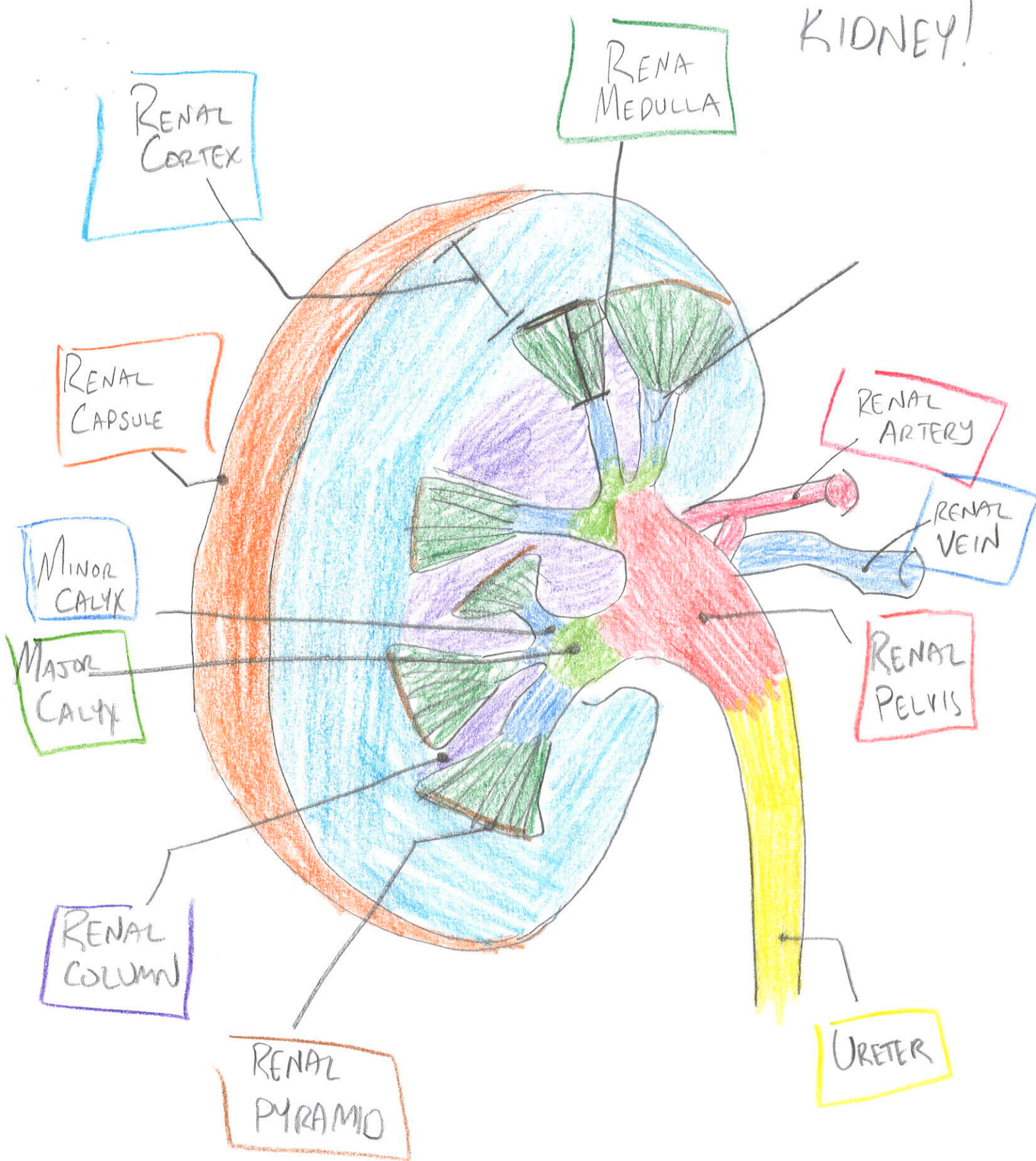
LUNG

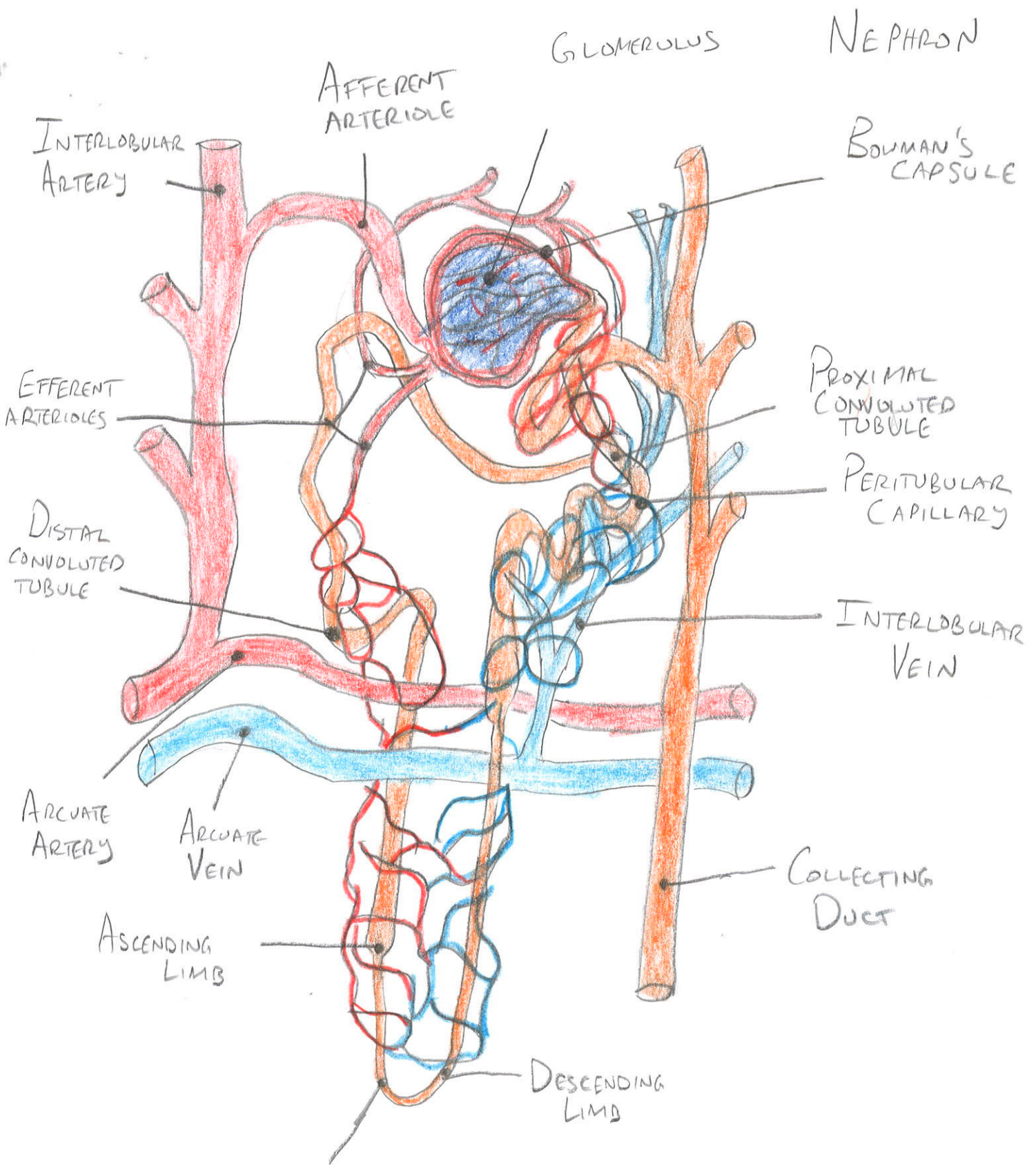
DIAPHRAGM

ALVEOLI



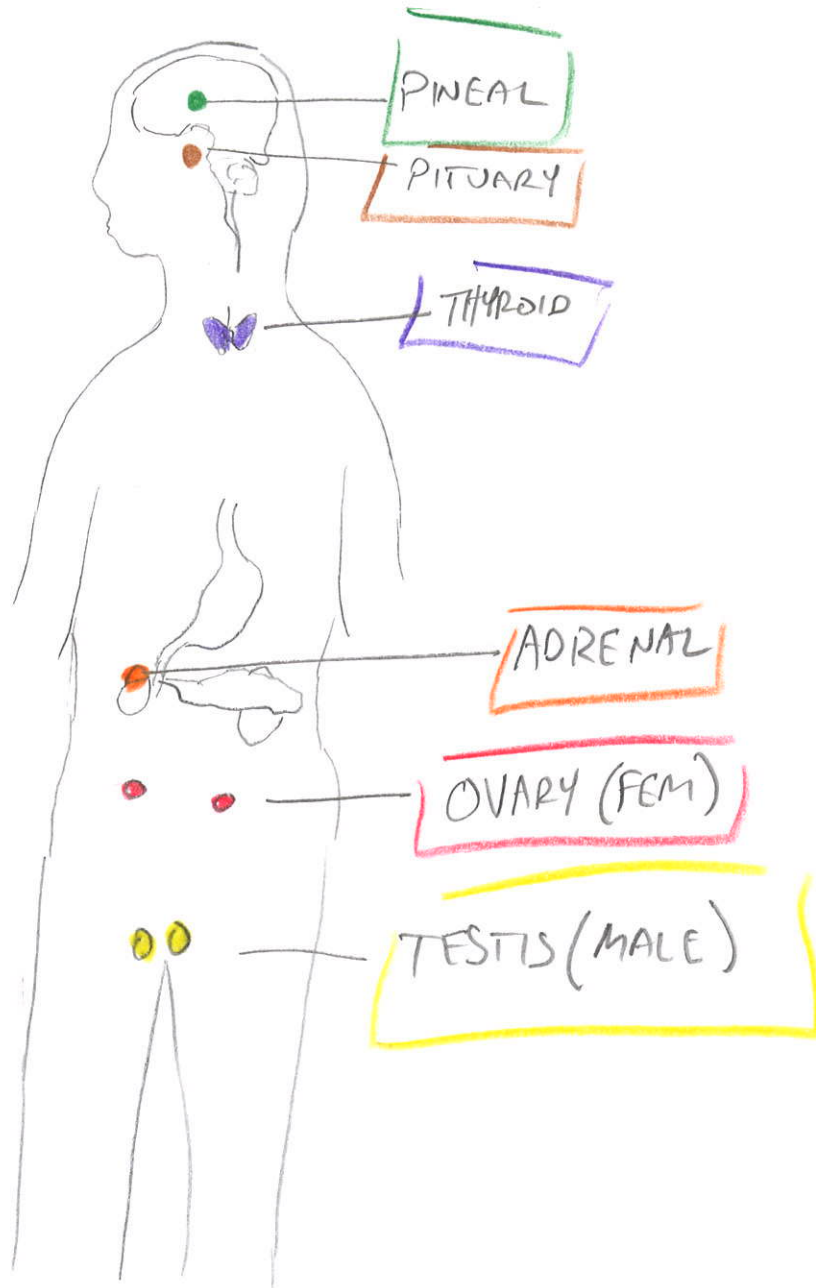
KIDNEY!





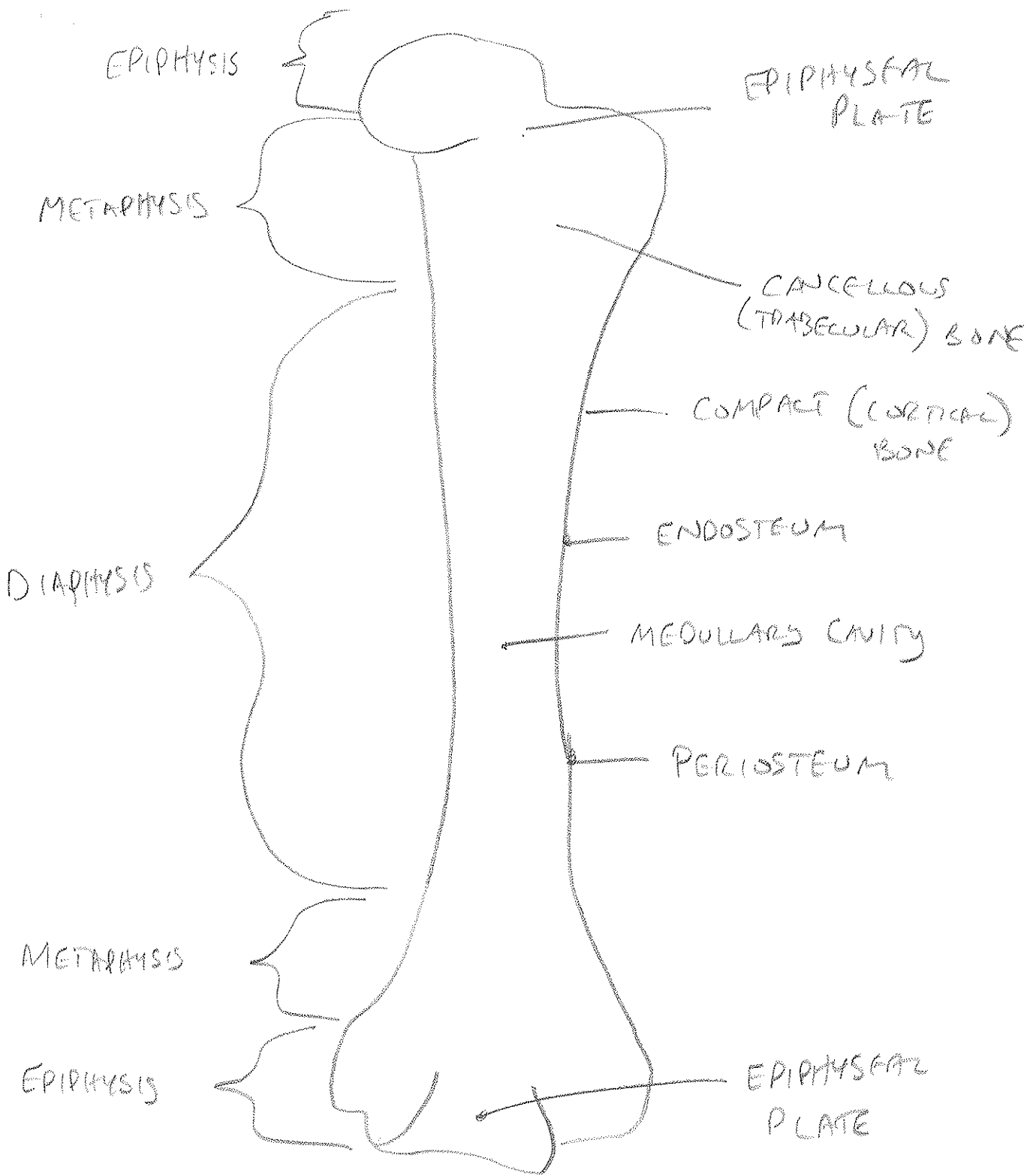
NEPHRON - REGULATES BLOOD BY FILTERING;
 ELIMINATES WASTE, CONTROLS pH,
 MAINTAINS ELECTROLYTES + METABOLITES.
 EXCRETES WASTES AS URINE.

ENDOCRINE

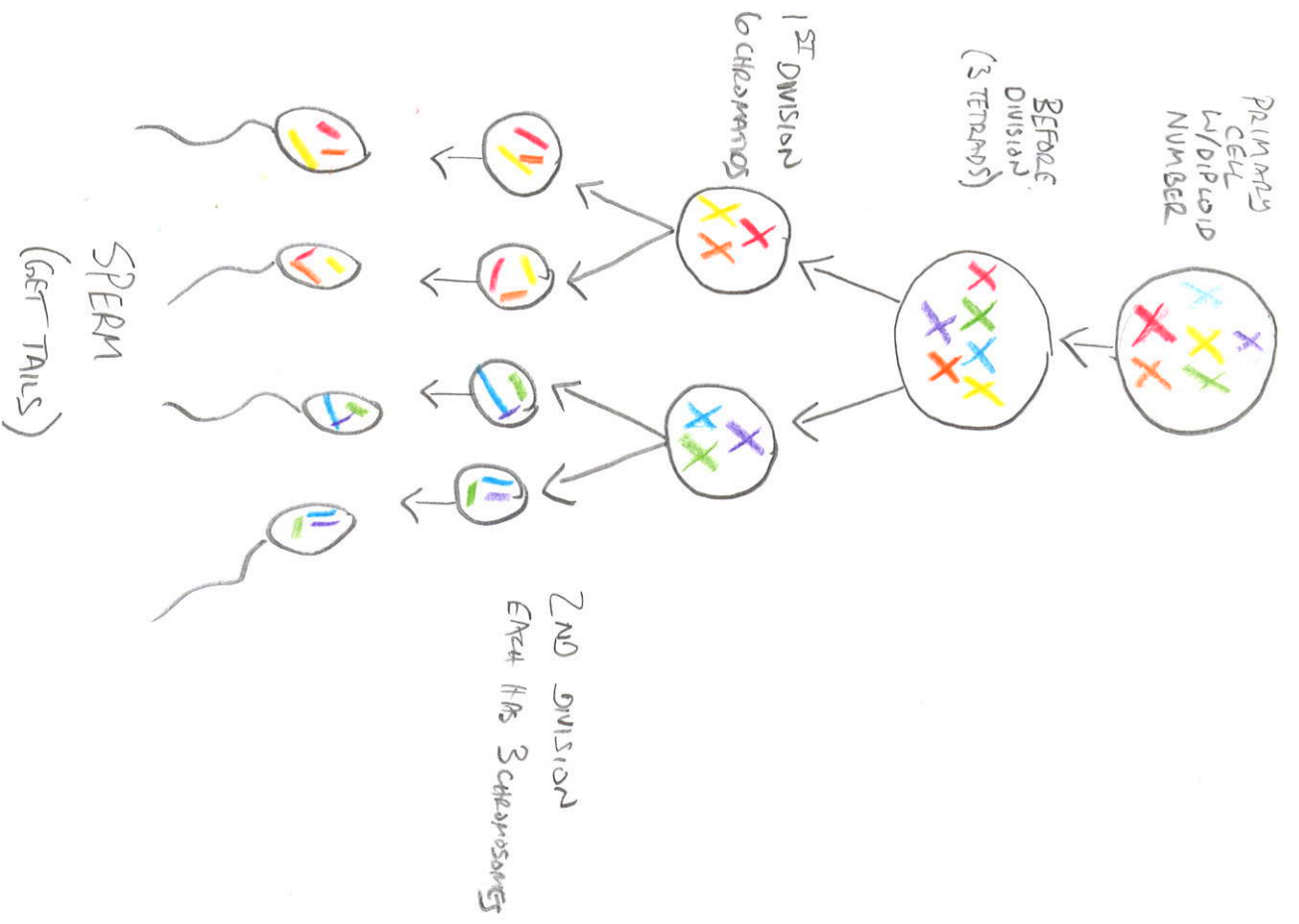


ADRENAL - RELEASES ADRENALINE/
HORMONES IN RESPONSE
TO STRESS THROUGH THE
SYNTHESIS OF CORTICOSTEROIDS

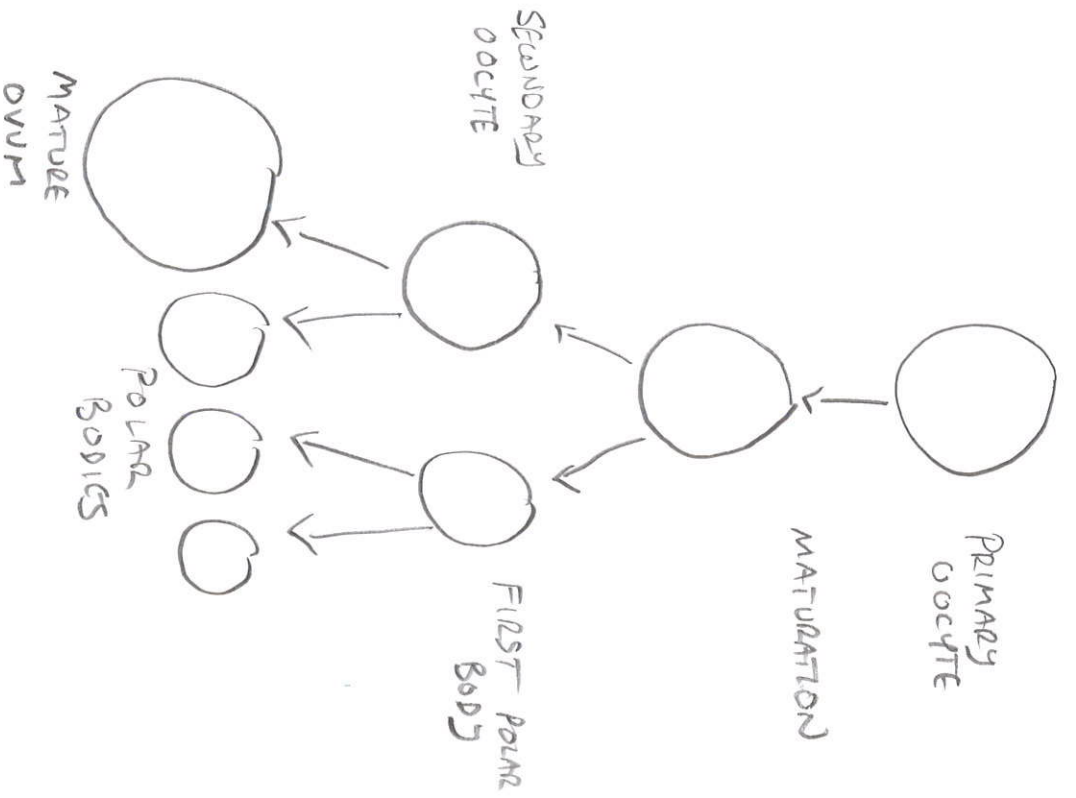
LONG BONE



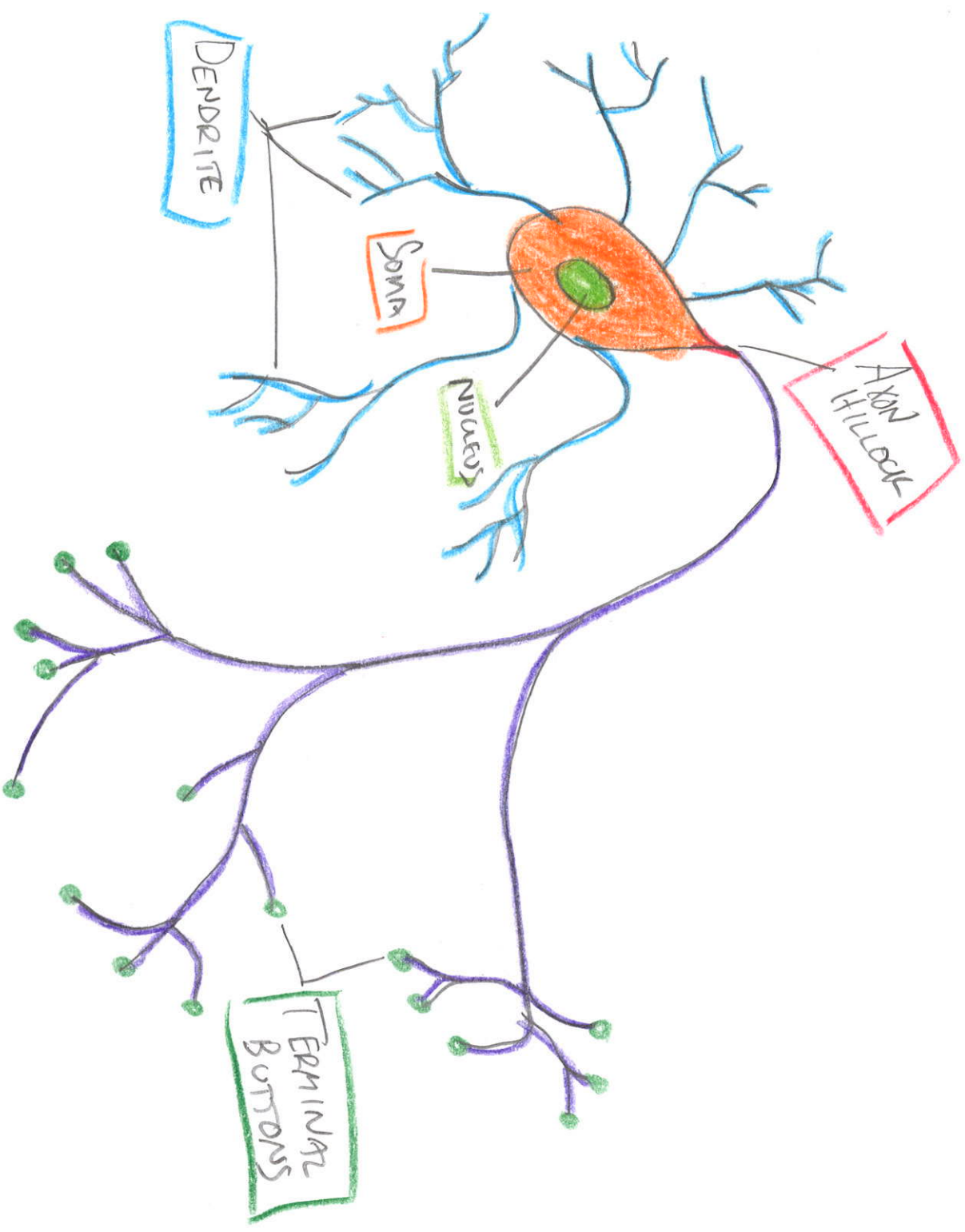
SPERMATOGENESIS



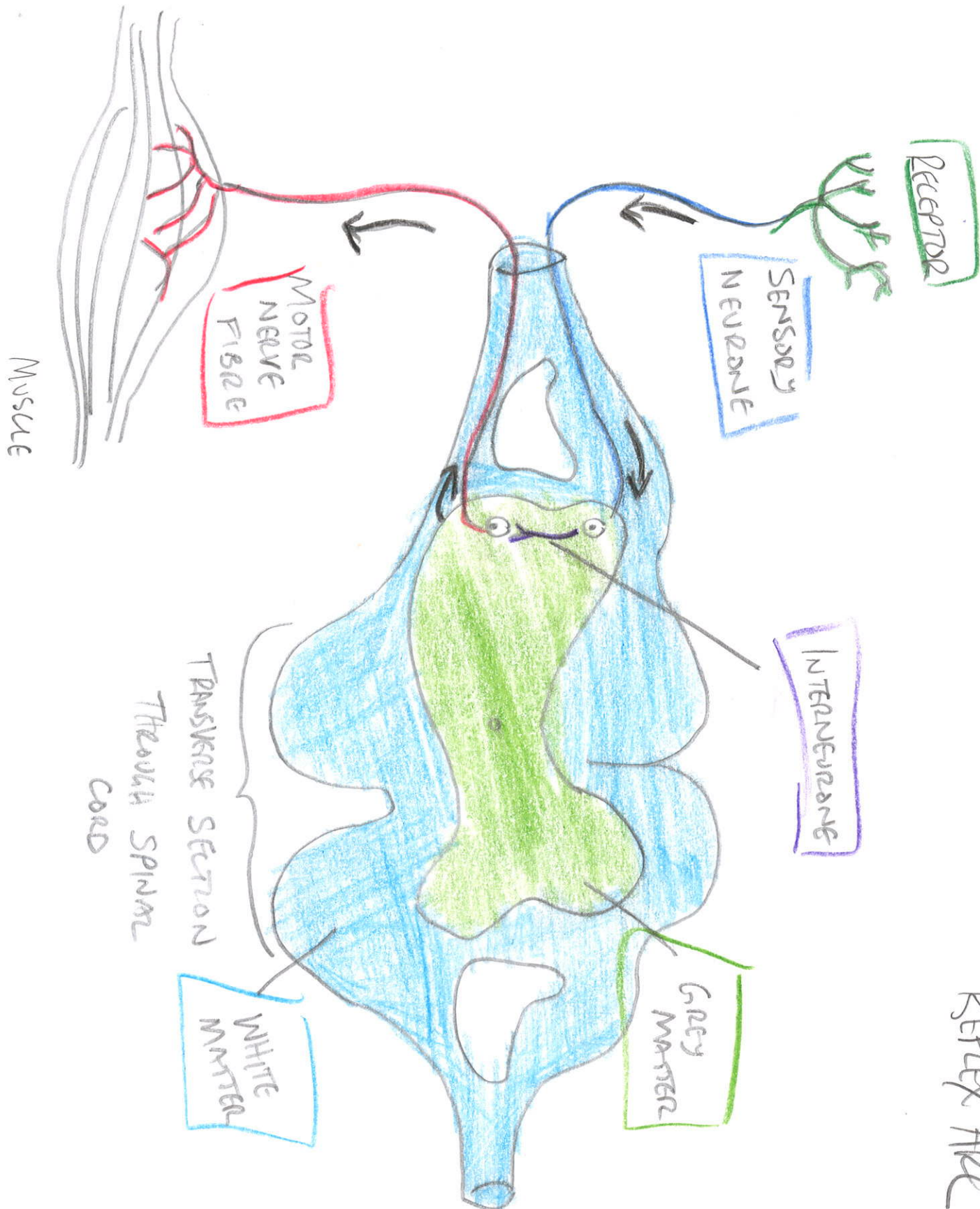
OOGENESIS



NEURON

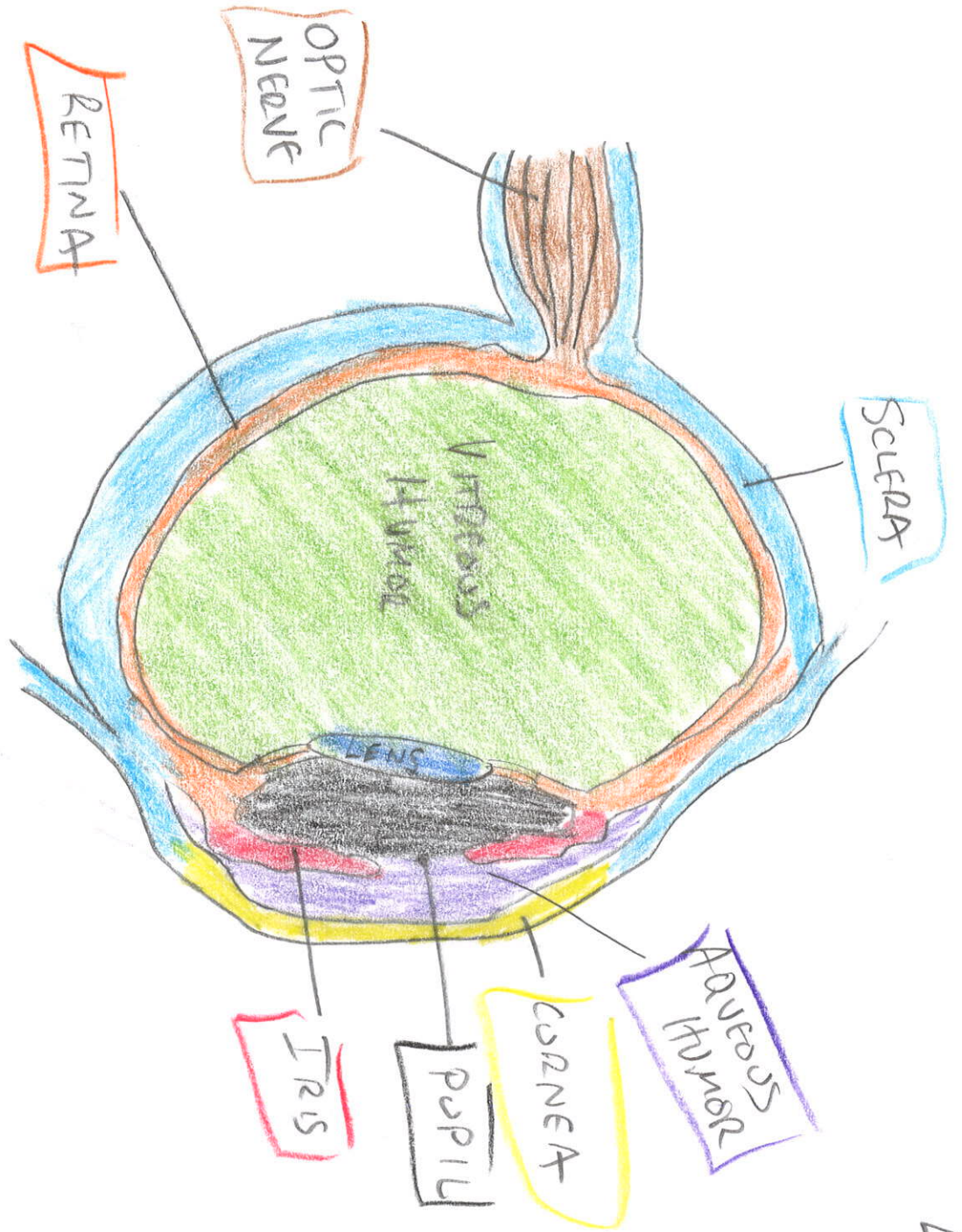


REFLEX ARC



CEREBRUM - HEMISPHERES - DIVIDES BRAIN + HELPS COORDINATE FUNCTIONS
 DIENCEPHALON - VEGETATIVE NERVE TISSUE: HELPS REG. THE POSTERIOR BRAIN STRUCTURES
 BRAIN STEM - JOINS BRAIN w/ SPINAL CORD
 MAIN SENSORY F/ FACE + NECK
 CEREBELLUM - MUSCLE CONTROL/COORD





EYE

TYPES OF MUSCLE TISSUE



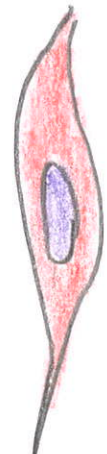
CARDIAC
MUSCLE
CELL

- WALLS OF THE HEART
- SPINDLE-SHAPED
- UNDER INVOLUNTARY CONTROL



SKELETAL
MUSCLE
CELL

- MUSCLES ATTACHED TO SKELETON
- APPEAR STRIATED
- UNDER VOLUNTARY CONTROL



SMOOTH
MUSCLE
CELL

- WALLS OF HOLLOW VISCERAL ORGANS
- APPEAR STRIATED
- UNDER INVOLUNTARY CONTROL

SARCOMERE

